

# OrmiTerrace

An Intelligence Assisted Living Experience

## Contemporary Style

4  2.5  2 

### FLOOR AREA

GROUND FLOOR	91 m <sup>2</sup>
SECOND FLOOR	82 m <sup>2</sup>
GARAGE	35 m <sup>2</sup>
OUTDOOR	20 m <sup>2</sup> to 35 m <sup>2</sup> *
<b>TOTAL</b>	<b>161 m<sup>2</sup> to 182 m<sup>2</sup>*</b>

## Contemporary Style

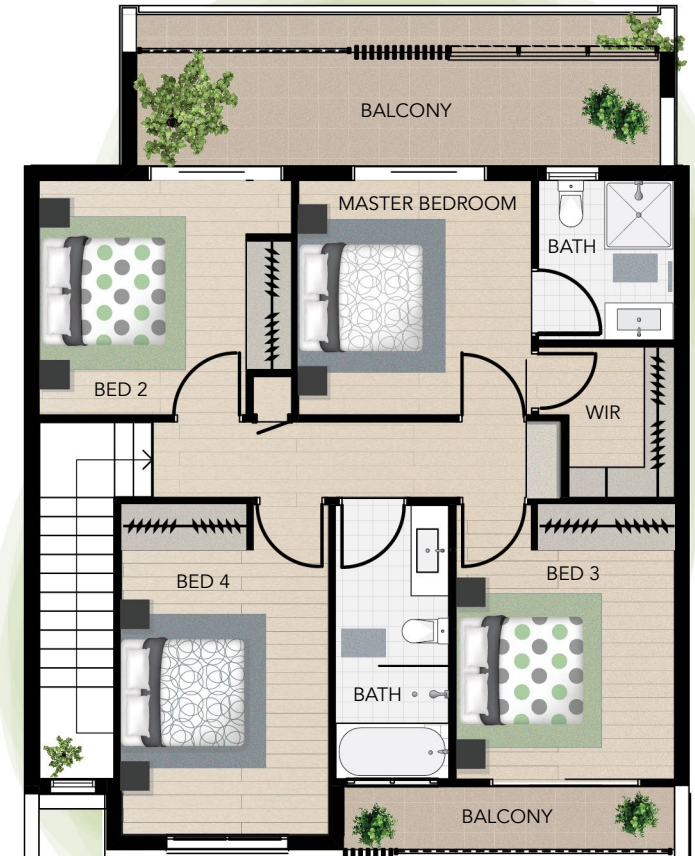
With Balcony\*

Select residences feature 12m<sup>2</sup> balconies, perfect for relaxing and adds a breathe of fresh air to the bedrooms upstairs.

Unit 2, 3, 9, 11, 12, 13, 14, 15, 16, 17.



Ground Floor



Second Floor

\*Floor plan not to scale

#### Disclaimer -

This floor plan has been designed prior to project. Whilst every care has been taken in the preparation of this brochure, details of the project, artist's impression and images are indicative only and may be subject to change. Furniture shown images is not included. All Information and material is subject to change without notice.

For further information please contact 0423 491 315 today or visit us online [www.ormiterrace.com.au](http://www.ormiterrace.com.au)